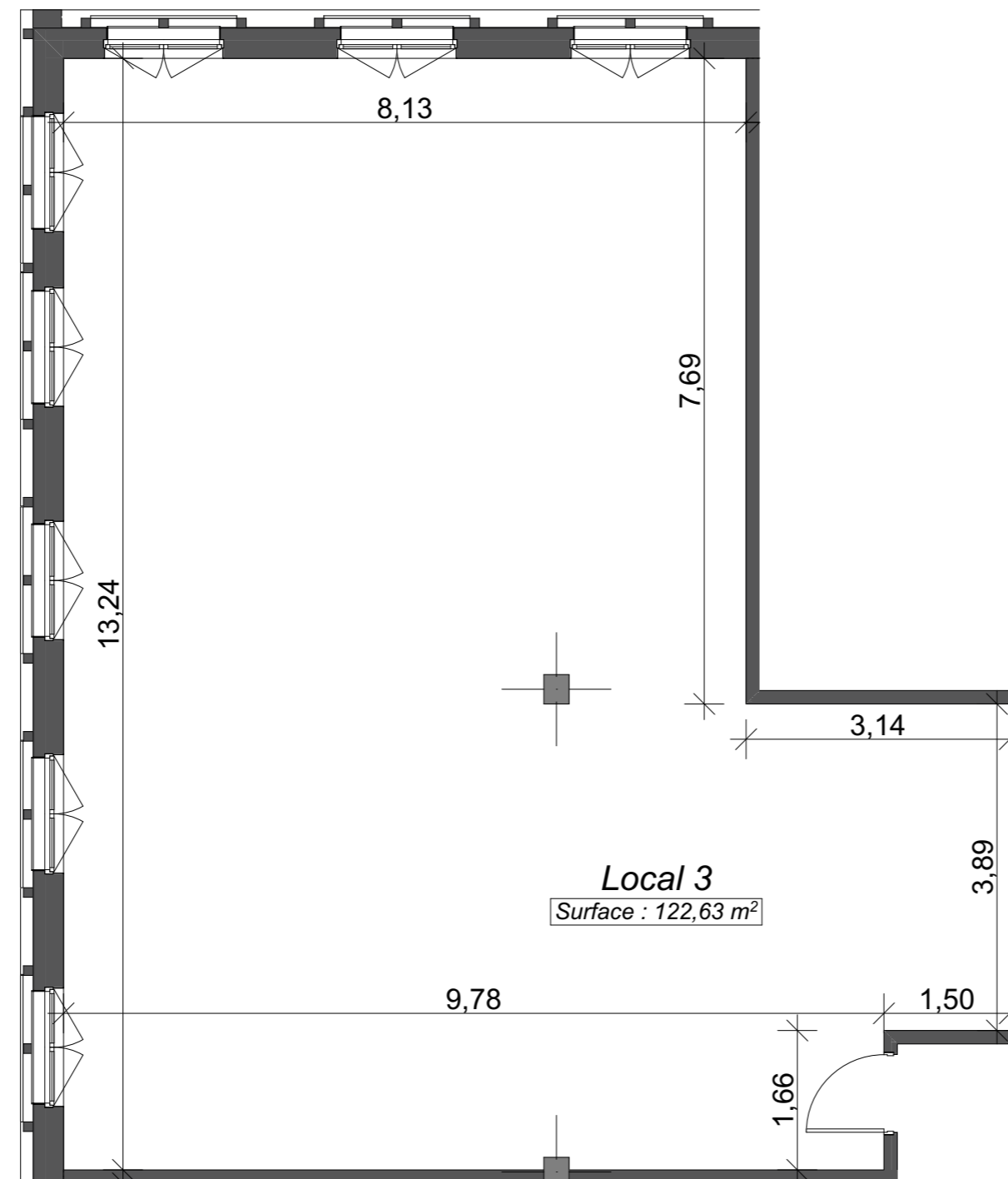
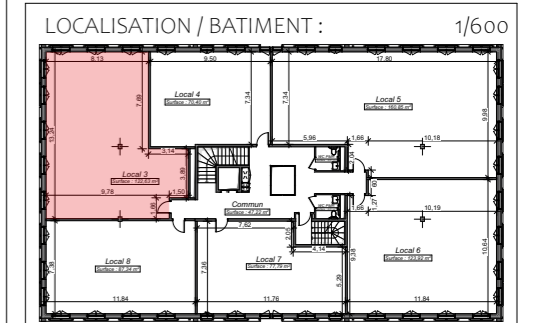
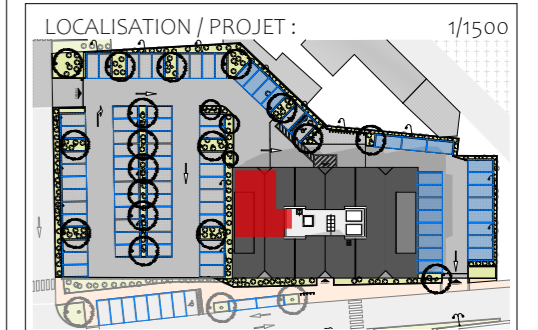


Maison médicale

Allée Pierre Klengenflus 67120 MOLSHEIM

NOM	NIVEAU
Cellule 3	R+1

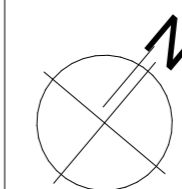


Echelle : 1/75e

25/09/2023

Pour l'acquéreur

Pour KS Promotion / SCCV 3M



ARCHITECTE :

4 place d'austerlitz 67000 Strasbourg
 T. : 03 88 35 41 56 / @ : info@atelierg5.fr
<http://www.atelierg5.fr>

